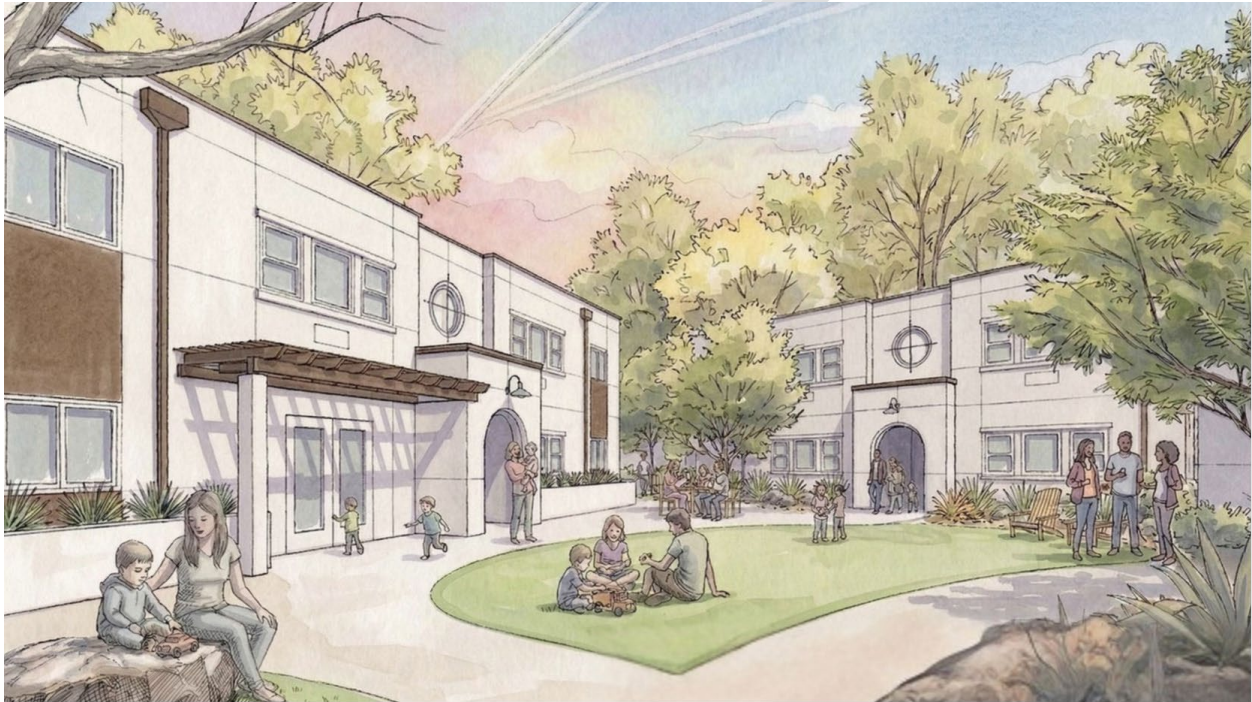


# Homekey+ Calle Real Family Village

## Frequently Asked Questions

### What is the Family Village?

The Family Village will be a *permanent supportive housing community* serving families moving from homelessness in Santa Barbara County. This Family Village closes the gap between living outdoors or in temporary shelter, and housing stability, where families can be safe and receive the critical supportive services needed.



### What will the community be like?

In addition to the permanent housing units, the community will have meeting spaces, laundry facilities, outdoor patio and play areas, and a dog run.

### Who will get to live at the Family Village?

This community will have 30 housing units for families. This may include families with Veterans and children with behavioral health or substance use challenges. Referrals will be made to the Family Village through the Santa Barbara County Coordinated Entry System, by local homeless service providers including CityNet, New Beginnings, Good Samaritan Shelter, Behavioral Wellness, and County Health.

## What are the units like?

At the Family Village, each household will have their own private permanent housing unit. This provides a sense of safety, privacy, and dignity. Unit sizes will range from approximately 500-900 square feet. With ample windows to provide natural light, each unit will include a kitchen, living area, bedroom, and bathroom. Just prior to opening, community members will be invited to “Adopt a Unit” to provide items such as linens, kitchen supplies, and personal hygiene products to welcome families into their new home.

## What supportive services will be offered at the site?

Services to support the families will include: case management, peer support activities, substance use disorder services, assistance obtaining benefits, education/employment services, legal aid, and behavioral and physical health.

## What is Housing First?

Housing First is an evidence-based housing assistance approach that prioritizes providing permanent housing without preconditions, regarding stable housing as the essential foundation for stabilization and recovery. Housing First is not Housing Only. The model pairs housing with flexible, voluntary social services, such as mental health care, case management, and addiction support. The full California Housing First Law can be found here:

[California WIC 8255](#)

## What is the timeline for opening, and what is the referral process?

The Family Village is projected to open by early 2028. Referrals will be made through the local Coordinated Entry System (CES). If you or someone you know is experiencing homelessness or at risk of homelessness, please connect with the [Santa Barbara County Coordinated Entry System](#).

## What transportation will be offered?

Families may travel to and from the property via personal vehicle or nearby public transit.

## Will pets be allowed?

Tenants will be allowed to bring beloved dogs and cats; a pet relief area will be provided on-site.

## How will the site be secured?

A property manager will be present 24 hours a day, 7 days a week, along with a monitored state-of-the-art security system.

*Questions?*

Jack Lorenz | DignityMoves | [dignitymoves.org](http://dignitymoves.org) | [Jack@DignityMoves.Org](mailto:Jack@DignityMoves.Org) | 310-266-0502